

Name: _____ Date: _____ Period: _____

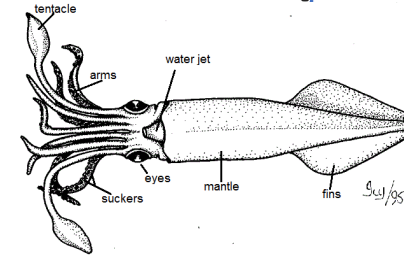
Mollusca, Arthropoda & Echinodermata Webquest

Oceanic Research Group; The Wonders of the Seas-Mollusks

<http://www.oceanicresearch.org/education/wonders/mollusk.html>

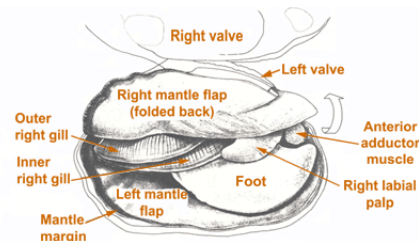
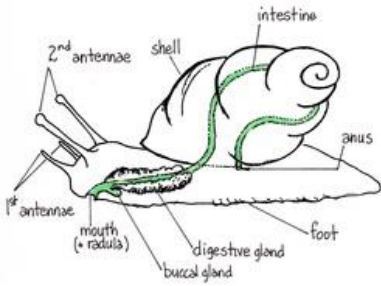
Ocean Animals: Mollusks

<http://www.mbgnet.net/salt/coral/animals/mollusk.htm>



1. What are the 3 main body parts of a mollusk?
2. Most mollusks usually have a _____ for protection outside their body. It is secreted by the _____.
3. What is the radula?
4. Describe the gastropods.
5. Describe the cephalopods.
6. Describe the bivalves.
7. What is the difference between an octopus and a squid?

Label the following: Bivalve, Cephalopod, Gastropod



Oceanic Research Group; The Wonders of the Seas-Arthropods

<http://www.oceanicresearch.org/education/wonders/arthropods.htm>

Introduction to Arthropods

<http://www.ucmp.berkeley.edu/arthropoda/arthropoda.html>

1. Describe the most obvious characteristic that all arthropods share. How is it formed? What does it do for the animal?
2. What does arthropod mean?
3. Explain the function of an open circulatory system.
4. How do compound eyes work?

Oceanic Research Group; The Wonders of the Seas-Echinoderms

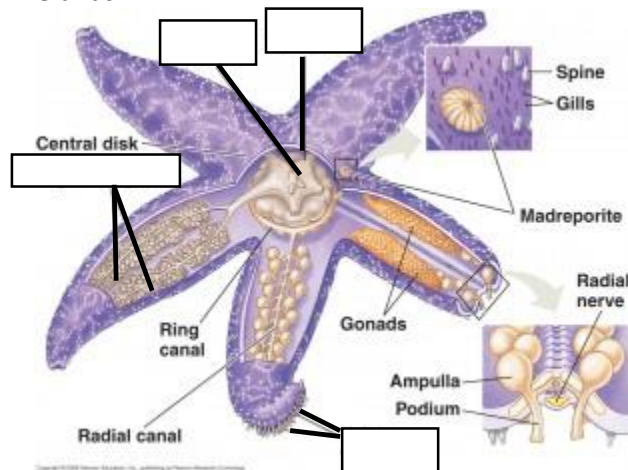
<http://www.oceanicresearch.org/education/wonders/echinoderm.html>

Introduction to Echinodermata

<http://www.ucmp.berkeley.edu/echinodermata/echinodermata.html>

1. What does Echinodermata mean?
2. This phylum lives exclusively in what type of environment?
3. Why? (do echinoderms live in the answer to #2)
4. Describe the symmetry of echinoderms.
5. Why is this symmetry strange for an advanced animal phylum?
6. What is the water vascular system?

Label the following: Tube Feet, Stomach, Anus, Digestive Glands



Explain in writing or a diagram the following theme:

“Form fits function” in the higher invertebrates.